

Public Health in Uttlesford



Essex County Council

Public Health in Uttlesford

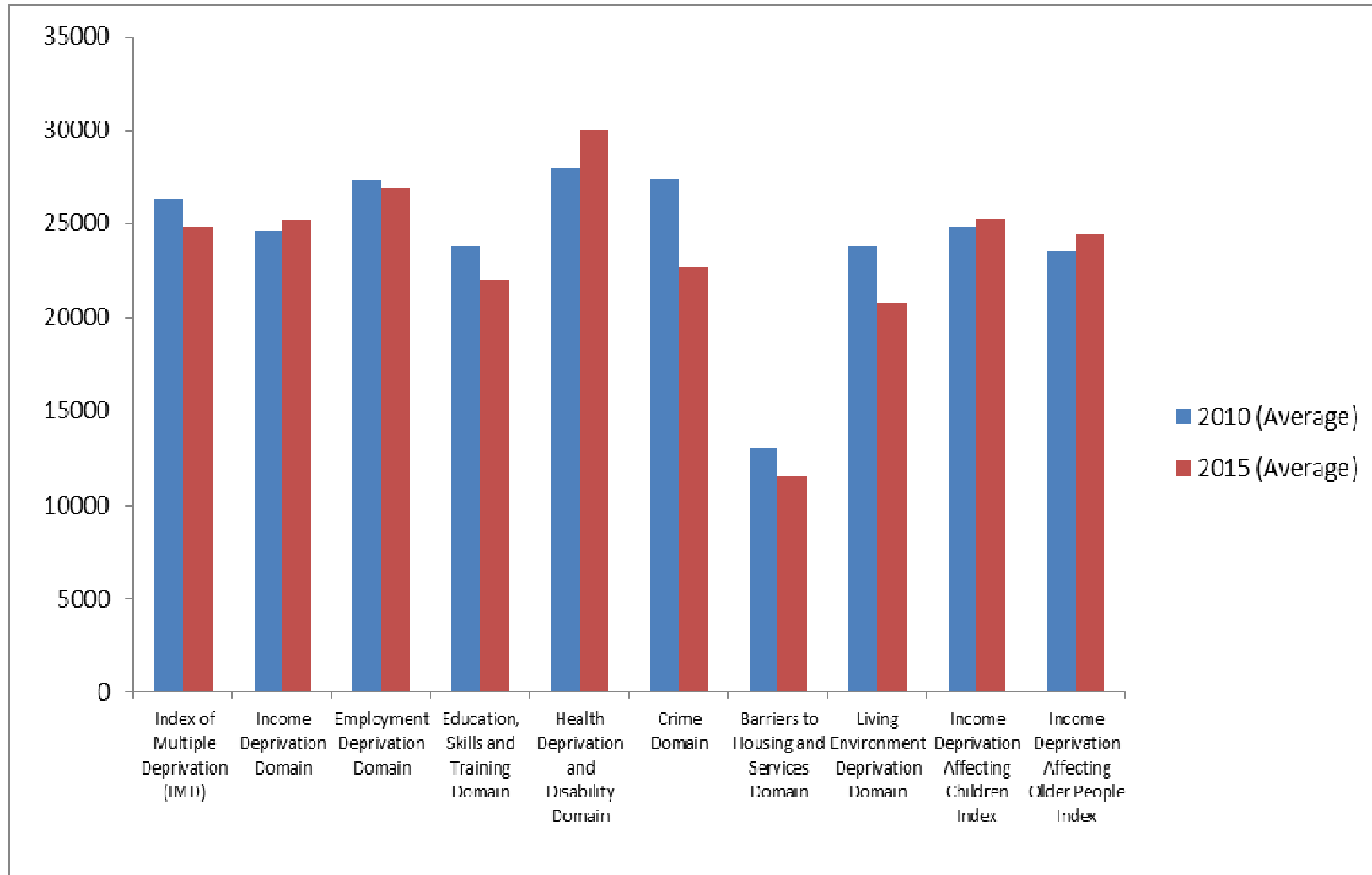
Sources include

- ONS Index of Multiple Deprivation from Census 2010 and 2015
- Public Health England (PHE) local profile ~ focus on trends over time
- Police Government statistics over time

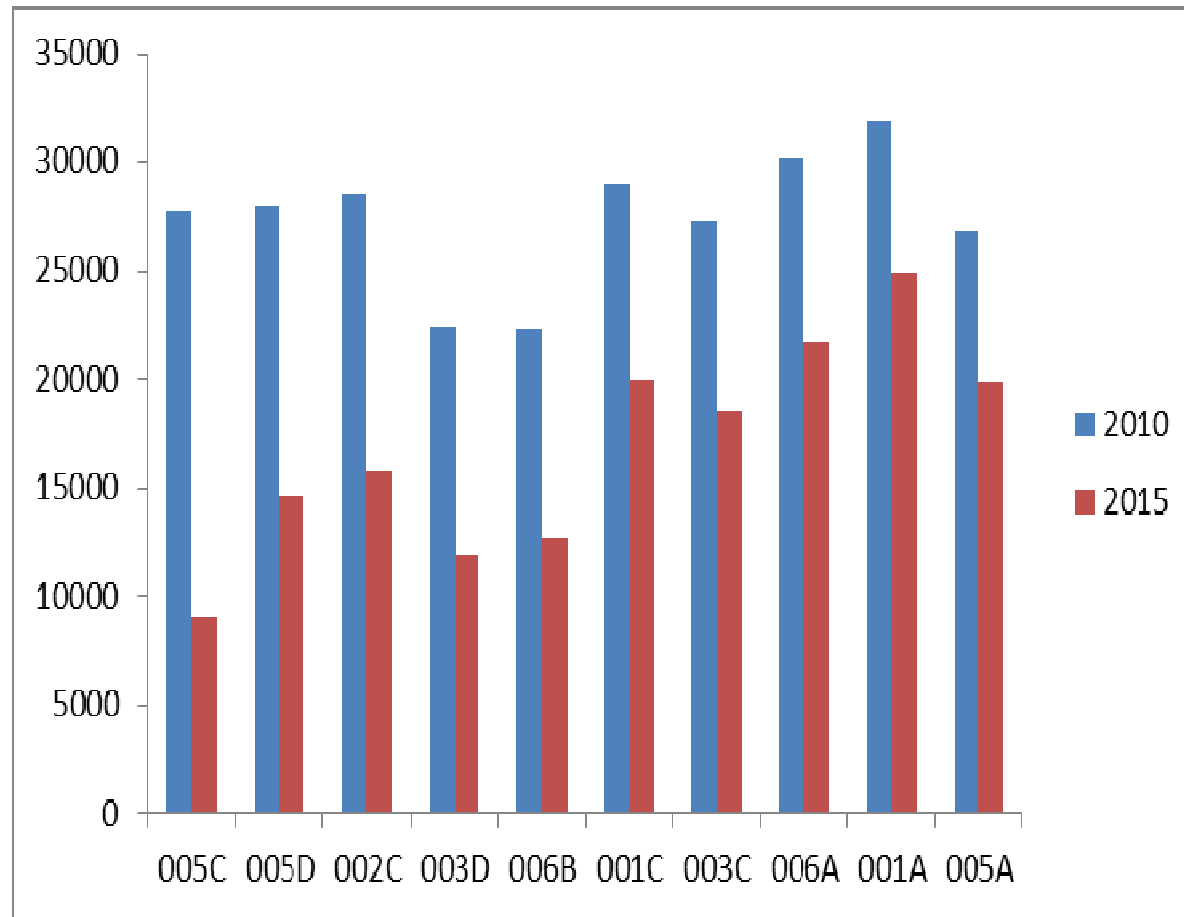
Key messages from the Census data trends

- Data is relative with 33,000 being as good as it gets and 1 as bad as it gets
- Uttlesford performs well in all domains except barriers to services and housing
- Overall IMD score has slightly worsened
- This is driven by increases in crime and deterioration in Living Environment score
- Health and income scores relatively improved but education declined.

IMD trend 2010 to 2015

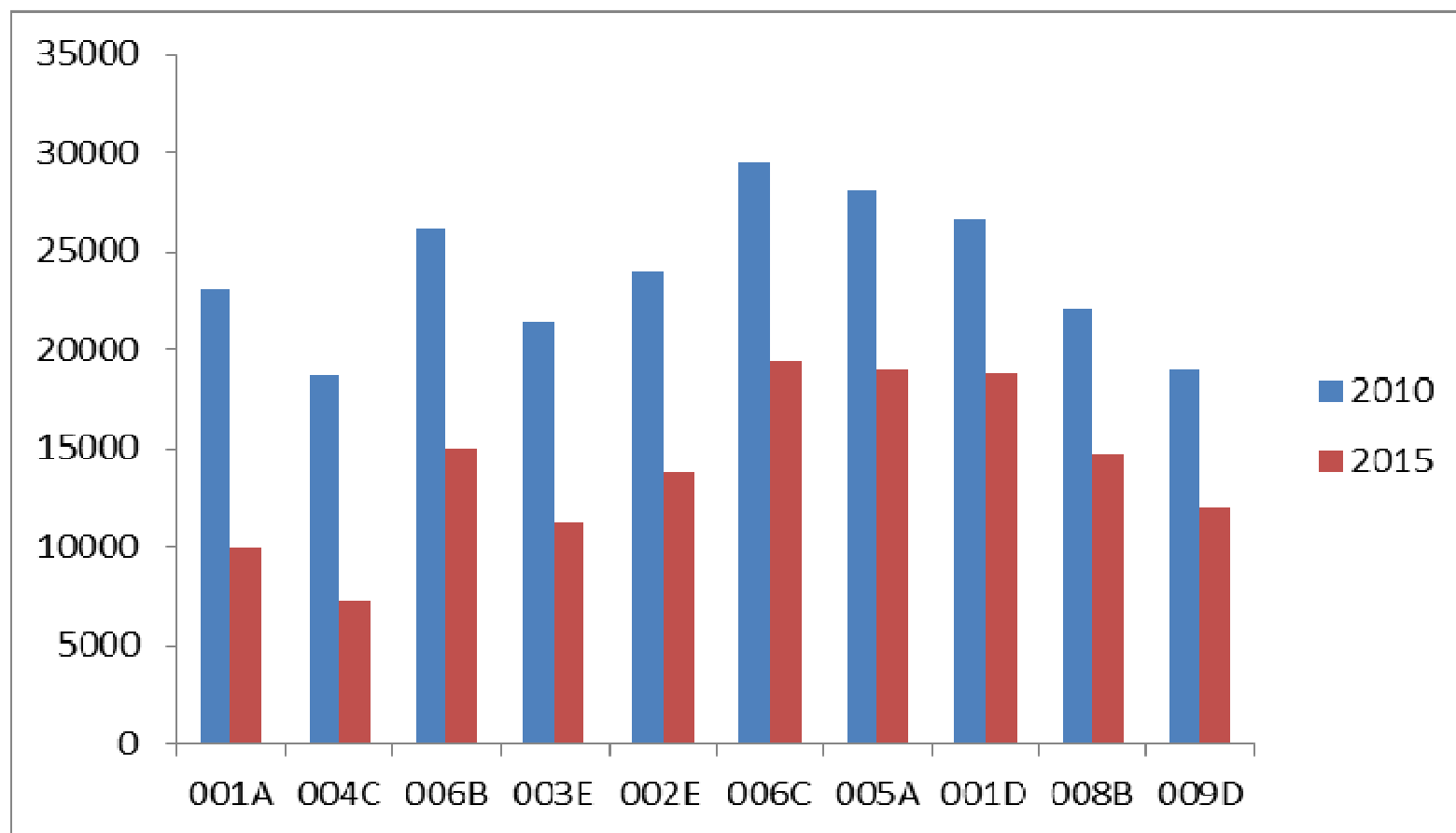


Deterioration Crime domain ~ worst LSOAs



The LSOAs included are Stansted North (2), Saffron Walden Castle (2), Newport (2), Takeley and the Canfields (1), Stansted South (1), Ashdon (1) and Elsenham and Henham (1). The area which dropped the most in rating is 005C which is in the Stansted North ward.

Deterioration Living Environment domain ~ worst LSOAs

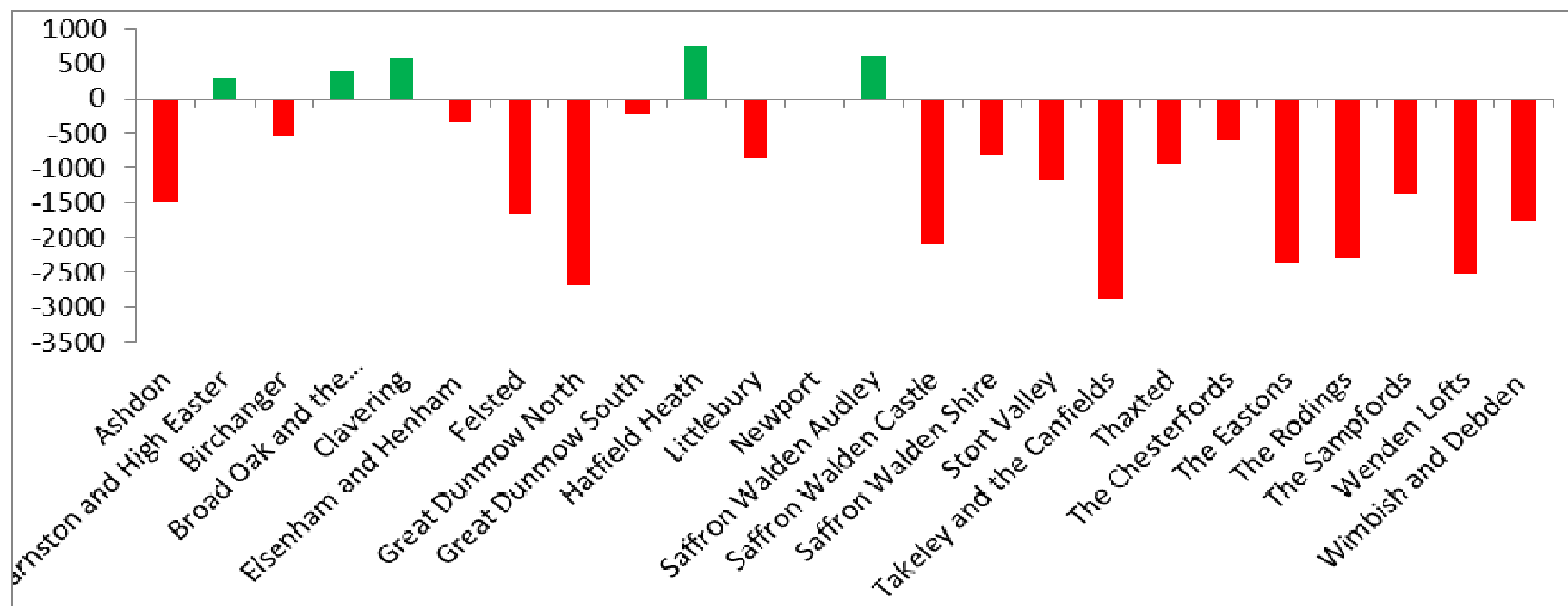


Two of these LSOAs are in the Takeley and the Canfields ward. The area which dropped the most in rating was 001A which is in the Ashdon ward.

Areas were Uttlesford in “most deprived” 10% and 20% ~ Barriers to Housing and Services domain

| LSOA | Ward | 2010 | 2015 |
|------|--------------------------------|------|------|
| 003E | Wenden Lofts | 381 | 200 |
| 006D | The Eastons | 899 | 341 |
| 009D | The Rodings | 258 | 365 |
| 003B | Littlebury | 1757 | 671 |
| 004C | The Sampfords | 1405 | 817 |
| 008E | Stebbing | 831 | 819 |
| 008A | Barnston and High Easter | 946 | 1199 |
| 005G | Stort Valley | 2280 | 1576 |
| 001A | Ashdon | 2966 | 1640 |
| 008B | Felsted | 2092 | 1850 |
| 006B | Takeley and the Canfields | 5404 | 2358 |
| 001D | The Chesterfords | - | 3090 |
| 006C | Takeley and the Canfields | 5588 | 3319 |
| 004D | Wimbish and Debden | - | 3414 |
| 001C | Saffron Walden Castle | - | 3793 |
| 009A | Broad Oak and the Hallingburys | 5307 | 4148 |
| 009B | Broad Oak and the Hallingburys | - | 4405 |
| 003A | Clavering | 4261 | 4810 |
| 003C | Newport | - | 5200 |
| 007C | Great Dunmow South | - | 5368 |
| 002C | Saffron Walden Castle | - | 5519 |
| 005F | Birchanger | - | 5938 |
| 004A | Thaxted | - | 6123 |

Average change in ranking across the 10 domains for each ward



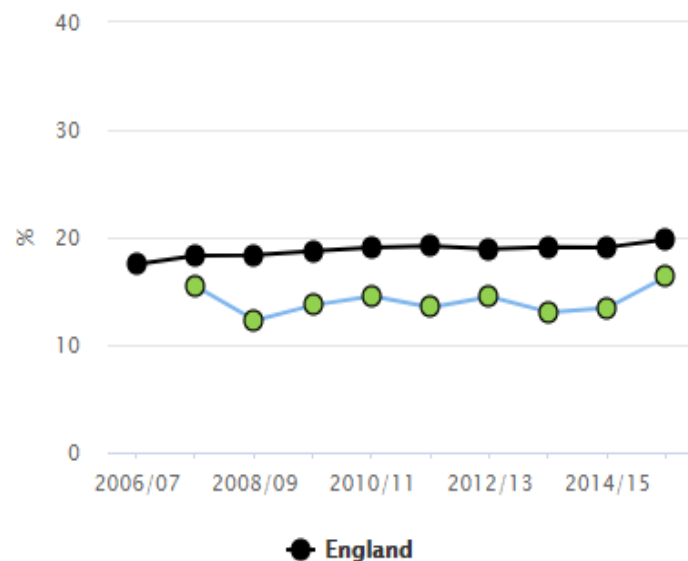
Key Messages from the Public Health Profile

- Uttlesford remains **relatively** healthy linked to socio economic position
- However data is comparative not absolute so even if Uttlesford **looks** good in some areas it is not always good news eg 62% overweight adults is better than average but still dreadful
- The PHE profile is a snapshot and it is useful to look at trends . Some areas look bad and are red eg road accidents but are over time going in the right direction while others eg alcohol admissions in young people are “green” but are actually getting much worse compared to national averages
- It does not consider areas of poor performance at a very local level eg while levels childhood obesity are below national levels, they are higher than national average in Takeley schools

| Domain | Indicator | Period | Local count | Local value | Eng value | Eng worst | England range | Eng best |
|--------------------------------------|--|---------------------|----------------|--------------------|----------------------|-----------|---------------|----------|
| Our communities | 1 Deprivation score (IMD 2015) | 2015 | n/a | 9.7 | 21.8 | 42.0 | | 5.0 |
| | 2 Children in low income families (under 16s) | 2014 | 1,190 | 7.9 | 20.1 | 39.2 | | 6.6 |
| | 3 Statutory homelessness | 2015/16 | 5 | 0.1 | 0.9 | | | |
| | 4 GCSEs achieved | 2015/16 | 593 | 70.4 | 57.8 | 44.8 | | 78.7 |
| | 5 Violent crime (violence offences) | 2015/16 | 666 | 7.9 | 17.2 | 36.7 | | 4.5 |
| | 6 Long term unemployment | 2016 | 46 | 0.9 ^{^20} | 3.7 ^{^20} | 13.8 | | 0.4 |
| Children's and young people's health | 7 Smoking status at time of delivery | 2015/16 | x ¹ | x ¹ | 10.6 \$ ¹ | 26.0 | | 1.8 |
| | 8 Breastfeeding initiation | 2014/15 | 529 | x ¹ | 74.3 | 47.2 | | 92.9 |
| | 9 Obese children (Year 6) | 2015/16 | 141 | 16.3 | 19.8 | 28.5 | | 9.4 |
| | 10 Admission episodes for alcohol-specific conditions (under 18s)† | 2013/14 - 15/16 | 14 | 24.6 | 37.4 | 121.3 | | 10.5 |
| | 11 Under 18 conceptions | 2015 | 13 | 8.2 | 20.8 | 43.8 | | 5.4 |
| Adults' health and lifestyle | 12 Smoking prevalence in adults | 2016 | n/a | 6.4 | 15.5 | 25.7 | | 4.9 |
| | 13 Percentage of physically active adults | 2015 | n/a | 63.9 | 57.0 | 44.8 | | 69.8 |
| | 14 Excess weight in adults | 2013 - 15 | n/a | 62.0 | 64.8 | 76.2 | | 46.5 |
| | 15 Cancer diagnosed at early stage | 2015 | 186 | 56.2 | 52.4 | 39.0 | | 63.1 |
| Disease and poor health | 16 Hospital stays for self-harm† | 2015/16 | 116 | 144.0 | 196.5 | 635.3 | | 55.7 |
| | 17 Hospital stays for alcohol-related harm† | 2015/16 | 435 | 519.1 | 647 | 1,163 | | 374 |
| | 18 Recorded diabetes | 2014/15 | 3,545 | 5.3 | 6.4 | 9.2 | | 3.3 |
| | 19 Incidence of TB | 2013 - 15 | 8 | 3.2 | 12.0 | 85.6 | | 0.0 |
| | 20 New sexually transmitted infections (STI) | 2016 | 179 | 337.4 | 795 | 3,288 | | 223 |
| | 21 Hip fractures in people aged 65 and over† | 2015/16 | 122 | 728.1 | 589 | 820 | | 312 |
| | 22 Life expectancy at birth (Male) | 2013 - 15 | n/a | 81.9 | 79.5 | 74.3 | | 83.4 |
| Life expectancy and causes of death | 23 Life expectancy at birth (Female) | 2013 - 15 | n/a | 84.8 | 83.1 | 79.4 | | 86.7 |
| | 24 Infant mortality | 2013 - 15 | 8 | 3.0 | 3.9 | 8.2 | | 0.8 |
| | 25 Killed and seriously injured on roads | 2013 - 15 | 122 | 48.4 | 38.5 | 103.7 | | 10.4 |
| | 26 Suicide rate | 2013 - 15 | 23 | x ² | 10.1 | 17.4 | | 5.6 |
| | 27 Smoking related deaths | 2013 - 15 | n/a | n/a | 283.5 | | | |
| | 28 Under 75 mortality rate: cardiovascular | 2013 - 15 | 113 | 50.6 | 74.6 | 137.6 | | 43.1 |
| | 29 Under 75 mortality rate: cancer | 2013 - 15 | 293 | 129.7 | 138.8 | 194.8 | | 98.6 |
| | 30 Excess winter deaths | Aug 2012 - Jul 2015 | 174 | 28.7 | 19.6 | 36.0 | | 6.9 |

Year 6: Prevalence of obesity Uttlesford

Proportion - %



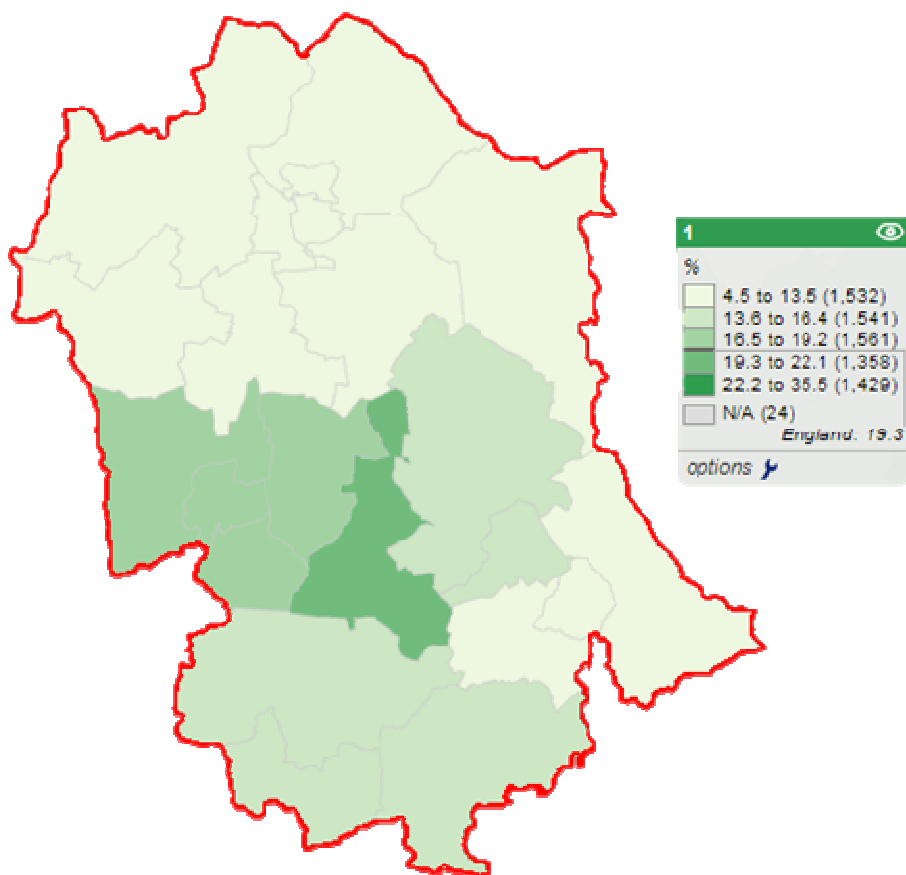
Recent trend: ➡

| Period | | Count | Value | Lower CI | Upper CI | Essex | England |
|---------|---|-------|-------|----------|----------|-------|---------|
| 2006/07 | | - | * | - | - | * | 17.5 |
| 2007/08 | ● | 112 | 15.5 | 13.0 | 18.3 | 16.1 | 18.3 |
| 2008/09 | ● | 86 | 12.3 | 10.0 | 14.9 | 16.1 | 18.3 |
| 2009/10 | ● | 101 | 13.7 | 11.4 | 16.4 | 16.1 | 18.7 |
| 2010/11 | ● | 109 | 14.5 | 12.2 | 17.2 | 17.7 | 19.0 |
| 2011/12 | ● | 99 | 13.5 | 11.2 | 16.2 | 17.2 | 19.2 |
| 2012/13 | ● | 108 | 14.5 | 12.2 | 17.2 | 16.7 | 18.9 |
| 2013/14 | ● | 94 | 13.0 | 10.8 | 15.7 | 16.7 | 19.1 |
| 2014/15 | ● | 114 | 13.5 | 11.3 | 15.9 | 17.1 | 19.1 |
| 2015/16 | ● | 141 | 16.3 | 14.0 | 19.0 | 17.4 | 19.8 |

Source: NHS Digital, National Child Measurement Programme

| Area | Value | Lower CI | Upper CI |
|---------------|-------|----------|----------|
| England | 19.8 | 19.7 | 19.9 |
| Essex | 17.4 | 16.8 | 18.0 |
| Castle Point | 22.0 | 19.4 | 24.9 |
| Harlow | 21.5 | 19.1 | 24.1 |
| Maldon | 20.2 | 17.3 | 23.4 |
| Basildon | 18.4 | 16.8 | 20.1 |
| Epping Forest | 17.9 | 15.9 | 20.2 |
| Tendring | 17.5 | 15.4 | 19.7 |
| Uttlesford | 16.3 | 14.0 | 19.0 |
| Chelmsford | 16.1 | 14.4 | 17.8 |
| Braintree | 16.0 | 14.3 | 17.9 |
| Rochford | 15.6 | 13.3 | 18.2 |
| Colchester | 15.4 | 13.8 | 17.1 |
| Brentwood | 13.5 | 11.2 | 16.2 |

Childhood obesity by ward



| Ward 2016 | Value (%) | LCL | UCL |
|--|-----------|------|------|
| Takeley | 20.8 | 15.6 | 27.1 |
| Stansted South & Birchanger | 18.7 | 12.5 | 26.9 |
| Elsenham & Henham | 17.2 | 11.1 | 25.5 |
| Stansted North | 17.2 | 11 | 25.8 |
| Stort Valley | 17.2 | 10.3 | 27.1 |
| Broad Oak & the Hallingburys | 16.1 | 10.5 | 23.8 |
| Hatfield Heath | 15.3 | 8.7 | 25.6 |
| High Easter & the Rodings | 14.6 | 8 | 24.9 |
| Thaxted & the Eastons | 14.2 | 9.2 | 21.3 |
| Great Dunmow North | 13.9 | 9 | 20.7 |
| Great Dunmow South & Barnston | 13.5 | 8.9 | 19.9 |
| Felsted & Stebbing | 12.9 | 8 | 20.3 |
| Flich Green & Little Dunmow | 12.9 | 7.4 | 21.6 |
| Saffron Walden Shire | 12.6 | 9 | 17.5 |
| Saffron Walden Audley | 12.5 | 7.7 | 19.7 |
| Saffron Walden Castle | 12.5 | 7.6 | 19.9 |
| Debden & Wimbish | 12.4 | 6.9 | 21.1 |
| The Sampfords | 12.4 | 6.8 | 21.4 |
| Ashdon | 12.1 | 6.7 | 21 |
| Littlebury, Chesterford & Wenden Lofts | 11.3 | 7.1 | 17.7 |
| Clavering | 10.7 | 5.2 | 20.8 |
| Newport | 10.7 | 5.5 | 19.9 |

Action to tackle Obesity

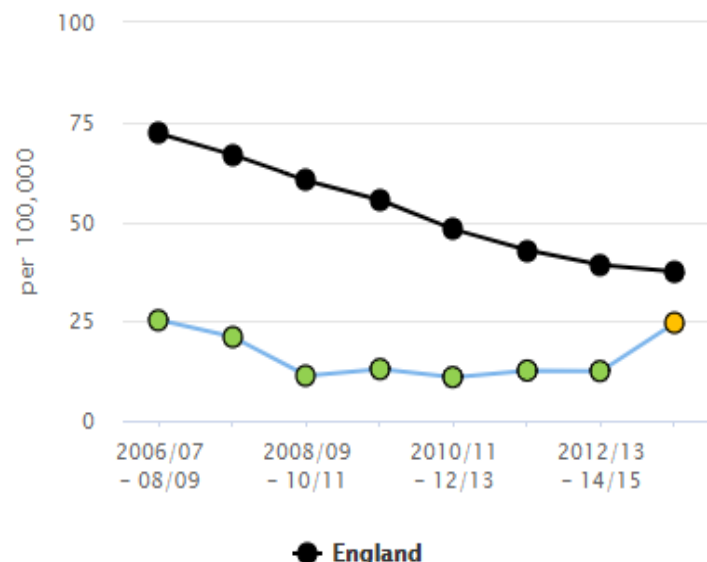
- a whole-systems approach to tackle obesity – focusing on Dunmow (current scoping underway).
- Working with our partners to introduce new opportunities for people to be active in their communities.
- Encouraging Daily Mile in local schools
- Shift to community led weight management opportunities
- SportEngland Local delivery pilot opportunity
- Active Essex as part of Public Health

Under 18 Alcohol admissions

5.02 - Admission episodes for alcohol-specific conditions - Under 18s (Persons)

Uttlesford

Crude rate - per 100,000



Recent trend: -

| Period | Count | Value | Lower CI | Upper CI | Essex | England |
|-----------------|-------|-------|----------|----------|-------|---------|
| 2006/07 - 08/09 | 13 | 25.2 | 13.4 | 43.1 | 35.6 | 72.1 |
| 2007/08 - 09/10 | 11 | 21.0 | 10.5 | 37.6 | 33.3 | 66.7 |
| 2008/09 - 10/11 | 6 | 11.3 | 4.1 | 24.6 | 32.8 | 60.3 |
| 2009/10 - 11/12 | 7 | 12.9 | 5.2 | 26.7 | 31.4 | 55.4 |
| 2010/11 - 12/13 | 6 | 10.9 | 4.0 | 23.8 | 30.2 | 48.0 |
| 2011/12 - 13/14 | 7 | 12.6 | 5.1 | 25.9 | 25.9 | 42.8 |
| 2012/13 - 14/15 | 7 | 12.4 | 5.0 | 25.6 | 24.7 | 39.0 |
| 2013/14 - 15/16 | 14 | 24.6 | 13.4 | 41.2 | 25.4 | 37.4 |

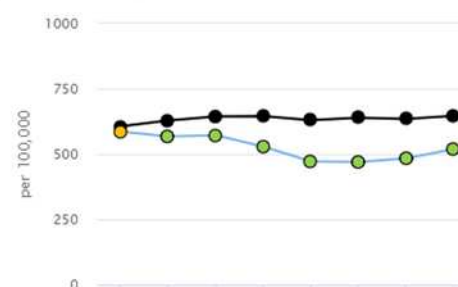
Source: Calculated by Public Health England: Risk Factors Intelligence team using data from NHS Digital -

10.01 - Admission episodes for alcohol-related conditions (Narrow) (Persons)

Uttlesford

Dirr

| Area | Value | Lower CI | Upper CI |
|---------------|-------|----------|----------|
| England | 37.4 | 36.7 | 38.0 |
| Essex | 25.4 | 22.2 | 28.9 |
| Colchester | 53.2 | 40.6 | 68.4 |
| Tendring | 35.8 | 23.8 | 51.8 |
| Harlow | 29.9 | 17.7 | 47.2 |
| Rochford | 29.7 | 16.6 | 48.9 |
| Epping Forest | 28.7 | 18.2 | 43.0 |
| Maldon | 27.7 | 13.3 | 50.9 |
| Uttlesford | 24.6 | 13.4 | 41.2 |
| Chelmsford | 18.6 | 11.4 | 28.7 |
| Braintree | 17.4 | 10.1 | 27.8 |
| Basildon | 10.5 | 5.6 | 18.0 |
| Castle Point | * | - | - |
| Brentwood | * | - | - |



Recent trend: -

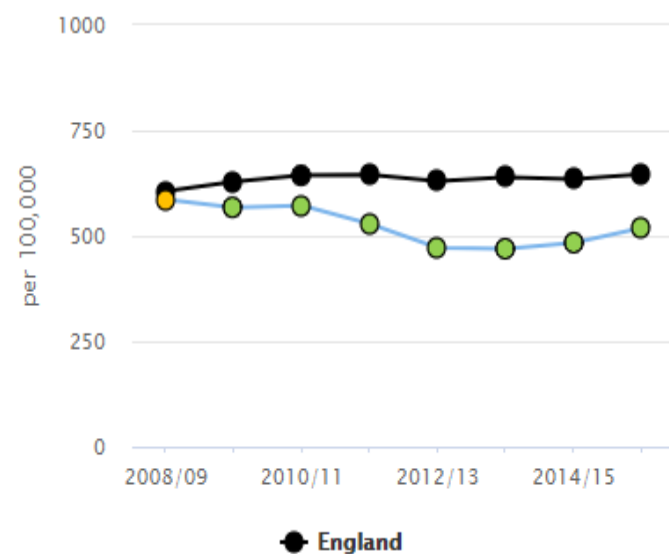
| Period | Count | Value | Lower CI | Upper CI |
|---------|-------|-------|----------|----------|
| 2008/09 | 435 | 586 | 532 | |
| 2009/10 | 423 | 568 | 514 | |
| 2010/11 | 442 | 572 | 519 | |
| 2011/12 | 405 | 528 | 477 | |
| 2012/13 | 374 | 472 | 424 | |
| 2013/14 | 381 | 470 | 423 | |
| 2014/15 | 397 | 484 | 437 | |
| 2015/16 | 435 | 519 | 471 | |

Source: Calculated by Public Health England: Risk Factors Intelligence Hospital Episode Statistics (HES) and Office for National Statistics (ONS)

10.01 - Admission episodes for alcohol-related conditions (Narrow) (Persons)

Uttlesford

Directly standardised rate - per 100,000

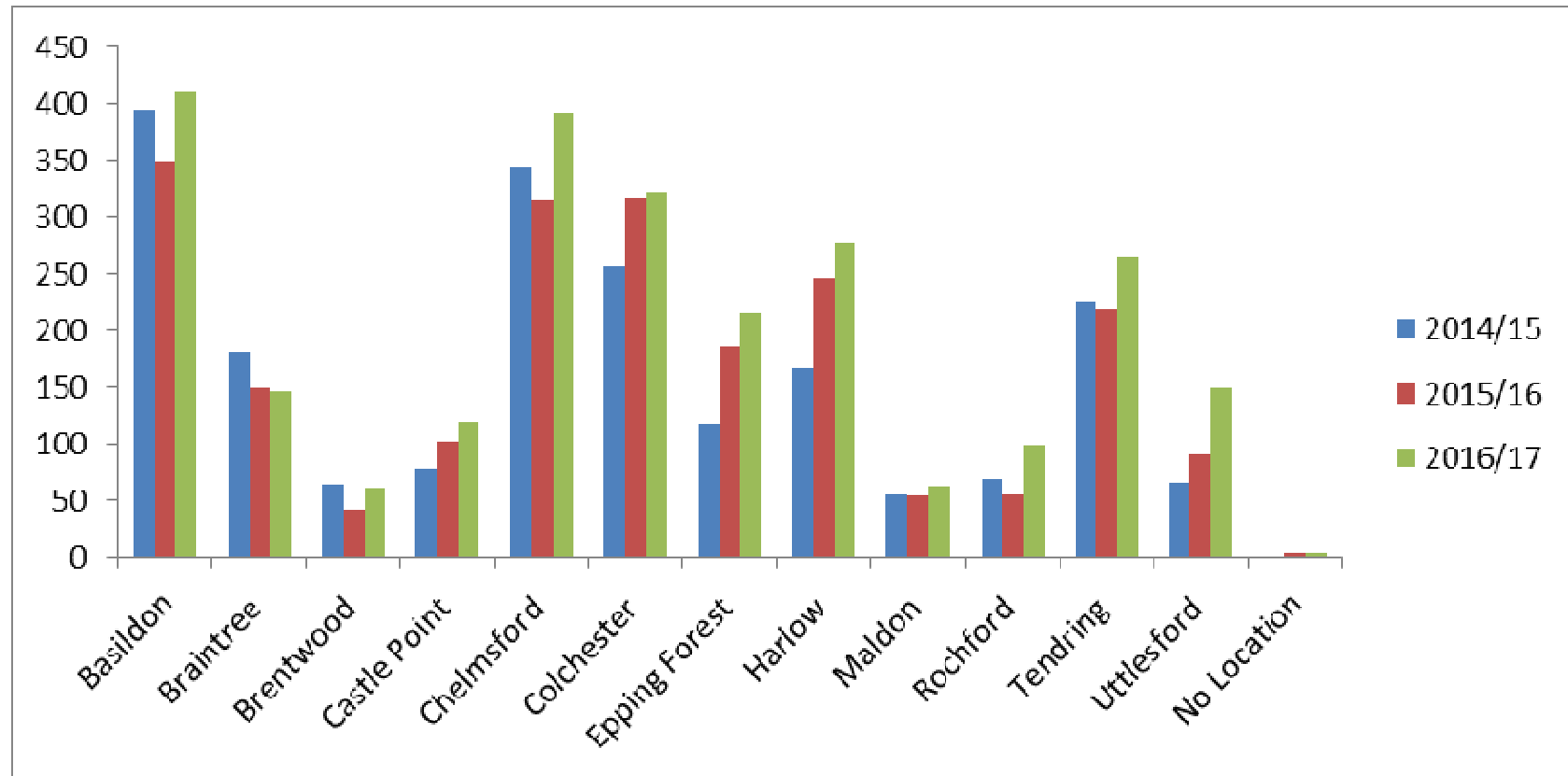


Recent trend: —

| Period | | Count | Value | Lower CI | Upper CI | Essex | England |
|---------|--|-------|-------|----------|----------|-------|---------|
| 2008/09 | | 435 | 586 | 532 | 645 | 485 | 606 |
| 2009/10 | | 423 | 568 | 514 | 625 | 516 | 629 |
| 2010/11 | | 442 | 572 | 519 | 628 | 517 | 643 |
| 2011/12 | | 405 | 528 | 477 | 583 | 530 | 645 |
| 2012/13 | | 374 | 472 | 424 | 523 | 498 | 630 |
| 2013/14 | | 381 | 470 | 423 | 520 | 570 | 640 |
| 2014/15 | | 397 | 484 | 437 | 534 | 564 | 635 |
| 2015/16 | | 435 | 519 | 471 | 571 | 578 | 647 |

Source: Calculated by Public Health England: Risk Factors Intelligence team using data from NHS Digital - Hospital Episode Statistics (HES) and Office for National Statistics (ONS) - Mid Year Population Estimates.

Drug Related Street Crime in Essex

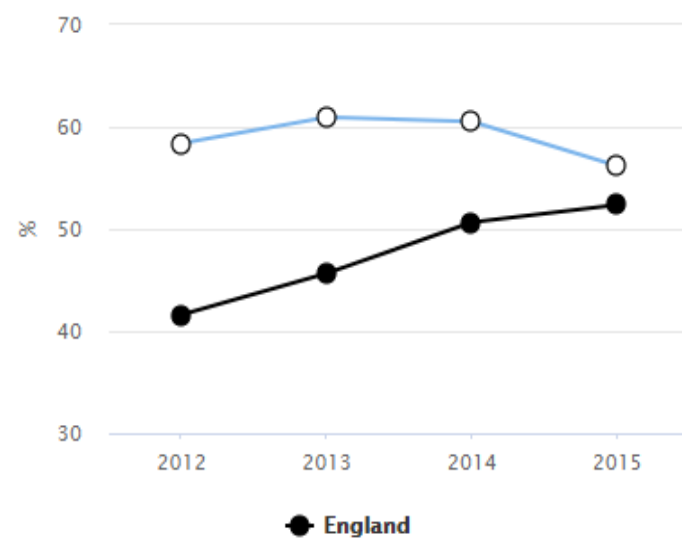


Deaths from all cancer, all ages, standardised mortality ratio, 2011-2015

| Ward 2016 | Value | LCL | UCL |
|--|-------|------|-------|
| Saffron Walden Shire | 107.3 | 87.4 | 130.4 |
| Stansted South & Birchanger | 106.1 | 75.5 | 145.1 |
| Flitch Green & Little Dunmow | 103.6 | 58 | 170.8 |
| Takeley | 103.2 | 77.5 | 134.6 |
| Thaxted & the Eastons | 102.8 | 81.3 | 128.3 |
| Great Dunmow South & Barnston | 102 | 83.1 | 123.9 |
| Elsenham & Henham | 96.7 | 70.3 | 129.9 |
| Stort Valley | 94.2 | 59.7 | 141.4 |
| Stansted North | 90.6 | 68.2 | 117.9 |
| Broad Oak & the Hallingburys | 90.5 | 67.4 | 119.1 |
| Newport | 88.6 | 63.9 | 119.8 |
| Saffron Walden Audley | 87.5 | 69 | 109.6 |
| Littlebury, Chesterford & Wenden Lofts | 86.9 | 64.3 | 114.9 |
| Great Dunmow North | 84.6 | 60.4 | 115.2 |
| Saffron Walden Castle | 83.2 | 60.5 | 111.7 |
| Debden & Wimbish | 81.4 | 48.2 | 128.6 |
| Clavering | 78.7 | 51.9 | 114.5 |
| The Sampfords | 69 | 42.7 | 105.4 |
| Felsted & Stebbing | 68.6 | 50.1 | 91.8 |
| Ashdon | 68.5 | 41.2 | 107 |
| Hatfield Heath | 57.8 | 34.8 | 90.2 |
| High Easter & the Rodings | 57.7 | 33 | 93.8 |

2.19 - Cancer diagnosed at early stage (experimental statistics) Uttlesford

Proportion - %



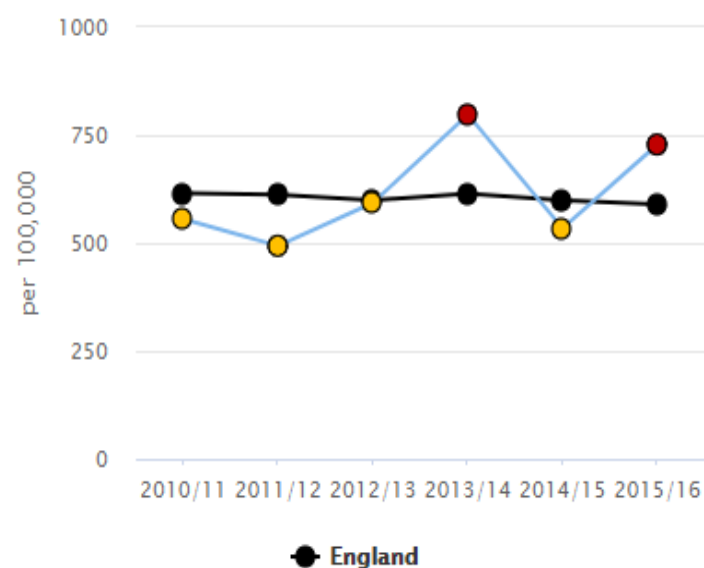
Recent trend: –

| Period | | Count | Value | Lower CI | Upper CI | Essex | England |
|--------|---|-------|-------|----------|----------|-------|---------|
| 2012 | ○ | 181 | 58.4 | 52.8 | 63.7 | 53.5 | 41.6 |
| 2013 | ○ | 209 | 60.9 | 55.7 | 65.9 | 54.2 | 45.7 |
| 2014 | ○ | 187 | 60.5 | 55.0 | 65.8 | 57.0 | 50.7 |
| 2015 | ○ | 186 | 56.2 | 50.8 | 61.4 | 54.2 | 52.4 |

Source: National Cancer Registry

4.14i - Hip fractures in people aged 65 and over (Persons) Uttlesford

Directly standardised rate - per 100,000



Recent trend: –

| Period | | Count | Value | Lower CI | Upper CI | Essex | England |
|---------|---|-------|-------|----------|----------|-------|---------|
| 2010/11 | ● | 77 | 556 | 438 | 695 | 642 | 615 |
| 2011/12 | ● | 71 | 494 | 385 | 623 | 621 | 612 |
| 2012/13 | ● | 89 | 593 | 476 | 731 | 671 | 599 |
| 2013/14 | ● | 123 | 797 | 662 | 952 | 663 | 614 |
| 2014/15 | ● | 86 | 534 | 427 | 660 | 630 | 599 |
| 2015/16 | ● | 122 | 728 | 604 | 870 | 643 | 589 |

Source: Hospital Episode Statistics (HES), NHS Digital for the respective financial year, England. Hospital Episode Statistics (HES) Copyright © 2016, Re-used with the permission of NHS Digital. All rights reserved. Local Authority estimates of resident population, Office for National Statistics (ONS) Unrounded mid-year population estimates produced by ONS and supplied to the Public Health England

Action to Address this issues

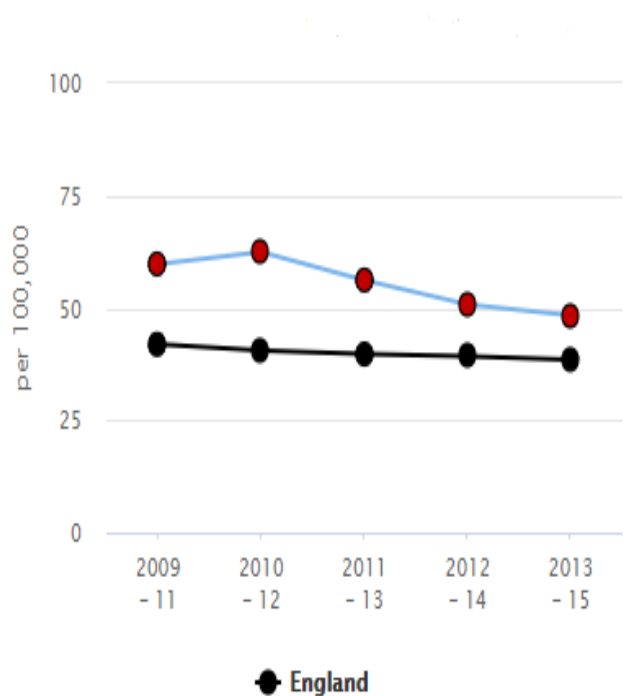
- The falls prevention service in West Essex will be changing from April 2018, focusing on strength and balance exercises
- Seated chair exercises in sheltered schemes (delivered by sheltered housing officers) – 5 classes per week across the district's schemes
- UDC assessing the gaps and looking at delivery within the community too (via Health Improvement Officer)
- UDC working with Active Essex to increase physical activity and opportunities for activities that can prevent falls. Opportunity with Sport England bid
- Exercise referral via 1Life including specialist classes, which could reduce falls.
- Promotion of walking for health schemes – walking guide currently being prepared
- Handyman repairs service – hand rails etc. (via Environmental Health)
- CVSU Gardening project funded by Uttlesford H&W Board – reducing trip hazards in the garden

RTA Improving Trend

1.10 - Killed and seriously injured (KSI) casualties on England's roads

Uttlesford

Crude rate - per 100,000



Recent trend: -

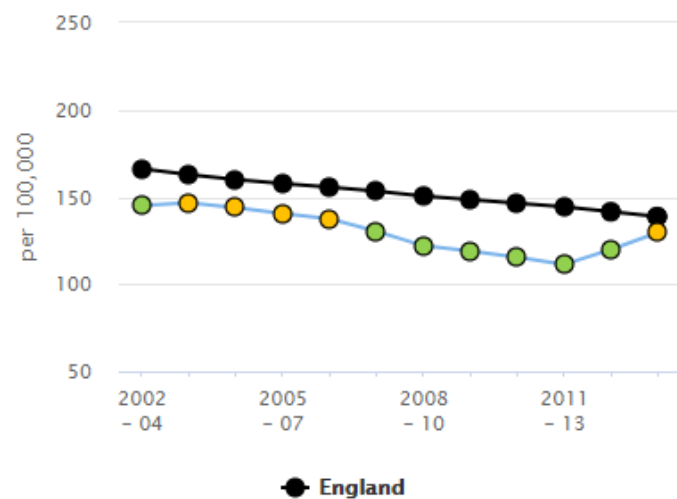
| Period | | Count | Value | Lower CI | Upper CI | Essex | England |
|-----------|---|-------|-------|----------|----------|-------|---------|
| 2009 - 11 | ● | 141 | 59.8 | 50.3 | 70.5 | 46.8 | 41.9 |
| 2010 - 12 | ● | 150 | 62.5 | 52.9 | 73.3 | 45.2 | 40.5 |
| 2011 - 13 | ● | 137 | 56.2 | 47.2 | 66.4 | 42.8 | 39.7 |
| 2012 - 14 | ● | 126 | 50.8 | 42.3 | 60.5 | 42.2 | 39.3 |
| 2013 - 15 | ● | 122 | 48.4 | 40.2 | 57.8 | 42.5 | 38.5 |

Source: Department for Transport

4.05i - Under 75 mortality rate from cancer (Persons)

Uttlesford

Directly standardised rate - per 100,000



Recent trend: –

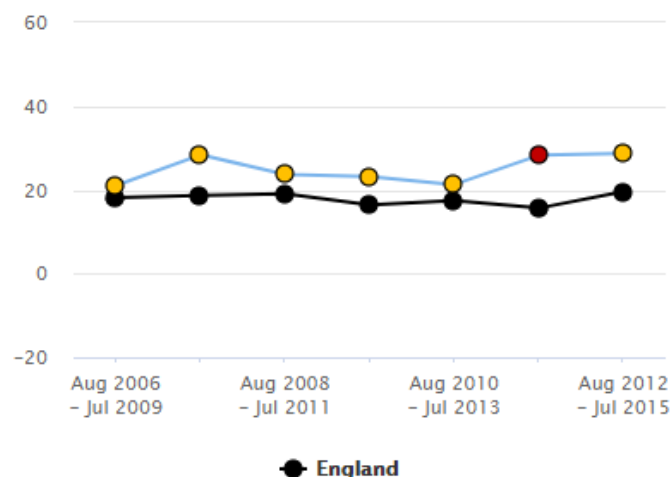
| Period | | Count | Value | Lower CI | Upper CI | Essex | England |
|-----------|---|-------|-------|----------|----------|-------|---------|
| 2002 - 04 | ● | 241 | 145.0 | 127.1 | 164.8 | 157.1 | 166.2 |
| 2003 - 05 | ● | 250 | 146.6 | 128.8 | 166.2 | 154.9 | 162.7 |
| 2004 - 06 | ● | 250 | 143.9 | 126.4 | 163.1 | 151.1 | 160.0 |
| 2005 - 07 | ● | 247 | 140.4 | 123.2 | 159.3 | 148.6 | 157.8 |
| 2006 - 08 | ● | 249 | 137.4 | 120.7 | 155.9 | 148.4 | 155.7 |
| 2007 - 09 | ● | 245 | 130.3 | 114.3 | 147.9 | 146.3 | 153.2 |
| 2008 - 10 | ● | 240 | 122.0 | 106.8 | 138.6 | 143.0 | 150.6 |
| 2009 - 11 | ● | 239 | 119.0 | 104.2 | 135.3 | 141.9 | 148.5 |
| 2010 - 12 | ● | 240 | 115.4 | 101.1 | 131.2 | 141.2 | 146.5 |
| 2011 - 13 | ● | 236 | 111.4 | 97.5 | 126.7 | 141.7 | 144.4 |
| 2012 - 14 | ● | 265 | 120.1 | 105.9 | 135.5 | 138.8 | 141.5 |
| 2013 - 15 | ● | 293 | 129.7 | 115.2 | 145.6 | 135.1 | 138.8 |

Source: Public Health England (based on ONS source data)

4.15iii - Excess winter deaths index (3 years, all ages) (Persons)

Uttlesford

Ratio



Recent trend: —

| Period | Count | Value | Lower CI | Upper CI | Essex | England |
|---------------------|-------|-------|----------|----------|-------|---------|
| Aug 2006 - Jul 2009 | 125 | 21.0 | 10.3 | 32.8 | 18.8 | 18.1 |
| Aug 2007 - Jul 2010 | 157 | 28.4 | 16.8 | 41.1 | 20.1 | 18.7 |
| Aug 2008 - Jul 2011 | 133 | 23.7 | 12.5 | 36.0 | 20.6 | 19.0 |
| Aug 2009 - Jul 2012 | 130 | 23.2 | 12.0 | 35.5 | 20.0 | 16.4 |
| Aug 2010 - Jul 2013 | 124 | 21.3 | 10.5 | 33.1 | 19.3 | 17.4 |
| Aug 2011 - Jul 2014 | 164 | 28.3 | 17.0 | 40.6 | 16.4 | 15.6 |
| Aug 2012 - Jul 2015 | 174 | 28.7 | 17.7 | 40.9 | 18.5 | 19.6 |

Source: Office for National Statistics: Public Health England Annual Births and Mortality Extracts

| Area | Value | Lower CI | Upper CI |
|---------------|-------|----------|----------|
| England | 19.6 | 19.2 | 20.0 |
| Essex | 18.5 | 16.1 | 20.9 |
| Uttlesford | 28.7 | 17.7 | 40.9 |
| Epping Forest | 24.7 | 16.8 | 33.1 |
| Braintree | 24.3 | 16.8 | 32.4 |
| Tendring | 21.8 | 15.7 | 28.3 |
| Basildon | 21.3 | 14.3 | 28.8 |
| Chelmsford | 19.8 | 12.5 | 27.6 |
| Colchester | 14.9 | 8.0 | 22.1 |
| Maldon | 13.5 | 3.3 | 24.7 |
| Rochford | 11.9 | 2.7 | 21.9 |
| Castle Point | 11.8 | 3.7 | 20.4 |
| Harlow | 8.8 | -0.6 | 19.1 |
| Brentwood | 8.8 | -0.3 | 18.7 |

Action to Address this issues

Uttlesford CAB:

- Developing an e-learning tool for befrienders to help volunteers identify clients who require support around winter resilience
- Developing a 'Keeping Warm' checklist with ECFRS to skill up volunteers and workers from local health and wellbeing services including information to simplify signposting of clients to appropriate local organisations
- Sessions in libraries / community centres across the district including Stansted / Thaxted / Great Dunmow / Saffron Walden and Takeley, offering advice on utility bills, insulation, energy efficiency, home safety and community support on a one to one basis
- Work with local domiciliary care providers to distribute leaflets and keeping warm information to clients across Uttlesford
- Pilot working with sixth form students at SWCHS to set up 'Snow Patrol' – students pledge to support elderly or vulnerable neighbours during periods of severe winter weather
- Stay Well events Oct 2017 (UDC and West Essex CCG partnership): Raise awareness of staying well and warm throughout winter. Providing an opportunity for people who may be at risk of social isolation to meet new people. There are plans to work collaboratively with CCG next year too.

